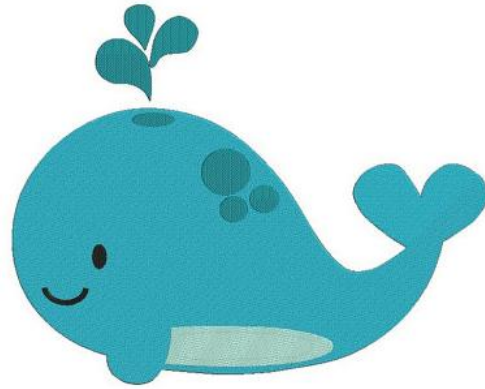


Is your baby *fussy*?



Infant Formula Study

Fussy formula-fed infants needed for a research study!

If your infant is formula-fed and fussy, he/she may be eligible to participate.

Contact us for more information:

801 773 4840
x3282

Eligible children include:

- Healthy infants
- Formula-fed
- Fussy
- Full-term at birth (not premature)
- 14-60 days old
- Not on any medications

For more information, please contact:

Rachel Gardner, BS
801 773 4840 x3282

Adam Hutchinson, MD
Tanner Clinic

