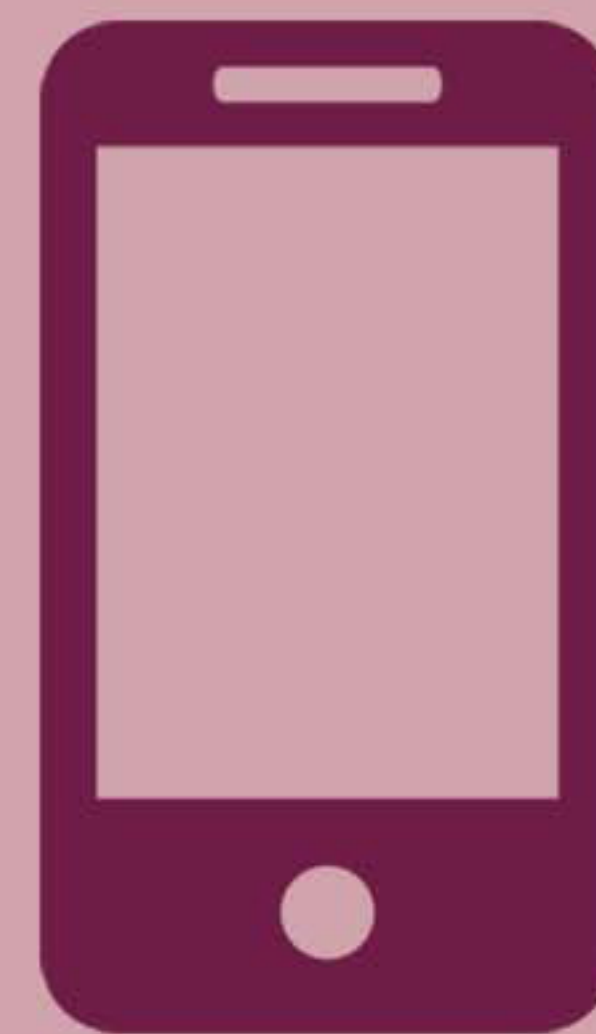


QUESTIONS?
*Make an appointment
with our psychiatry team!*



***TMS Therapy for Major
Depressive Disorder (MDD)***

With MDD there are biological alterations in the brain, including an imbalance of activity in frontal brain regions. These areas of the brain are involved in important mental processes and also have connections with deeper brain regions responsible for emotions. Due to the ability of rTMS to alter brain activity, it was first proposed as a therapy for MDD in the mid-1990s. Since then, numerous studies have demonstrated the safety and effectiveness of rTMS in MDD, especially in treatment-resistant patients who have not responded to antidepressants.



TannerClinic.com
801.773.4840

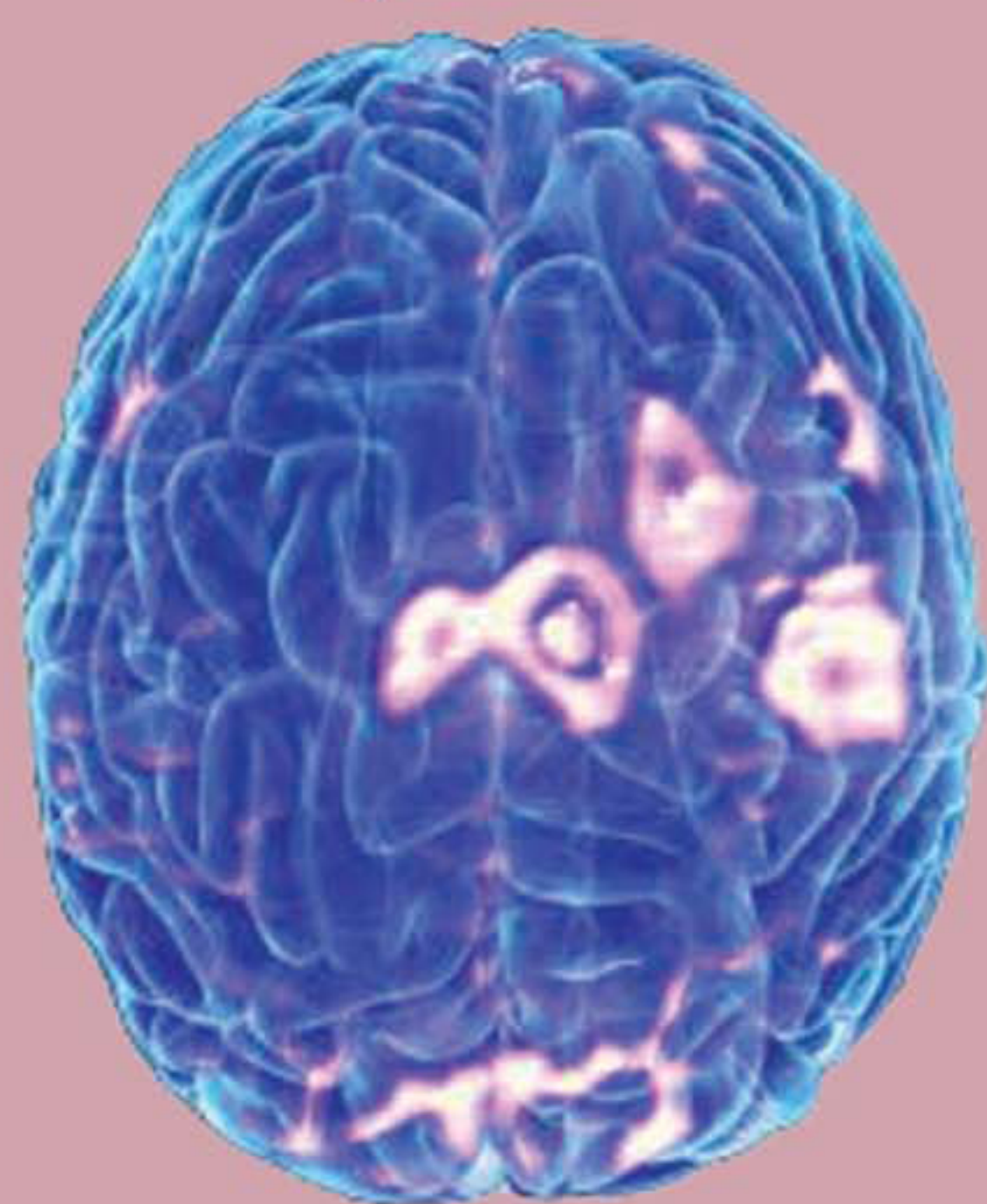
Approximately 58% of treatment-resistant patients respond positively to rTMS therapy.

***What is
TMS Therapy?***

What is Treatment Resistant Depression (TRD)?

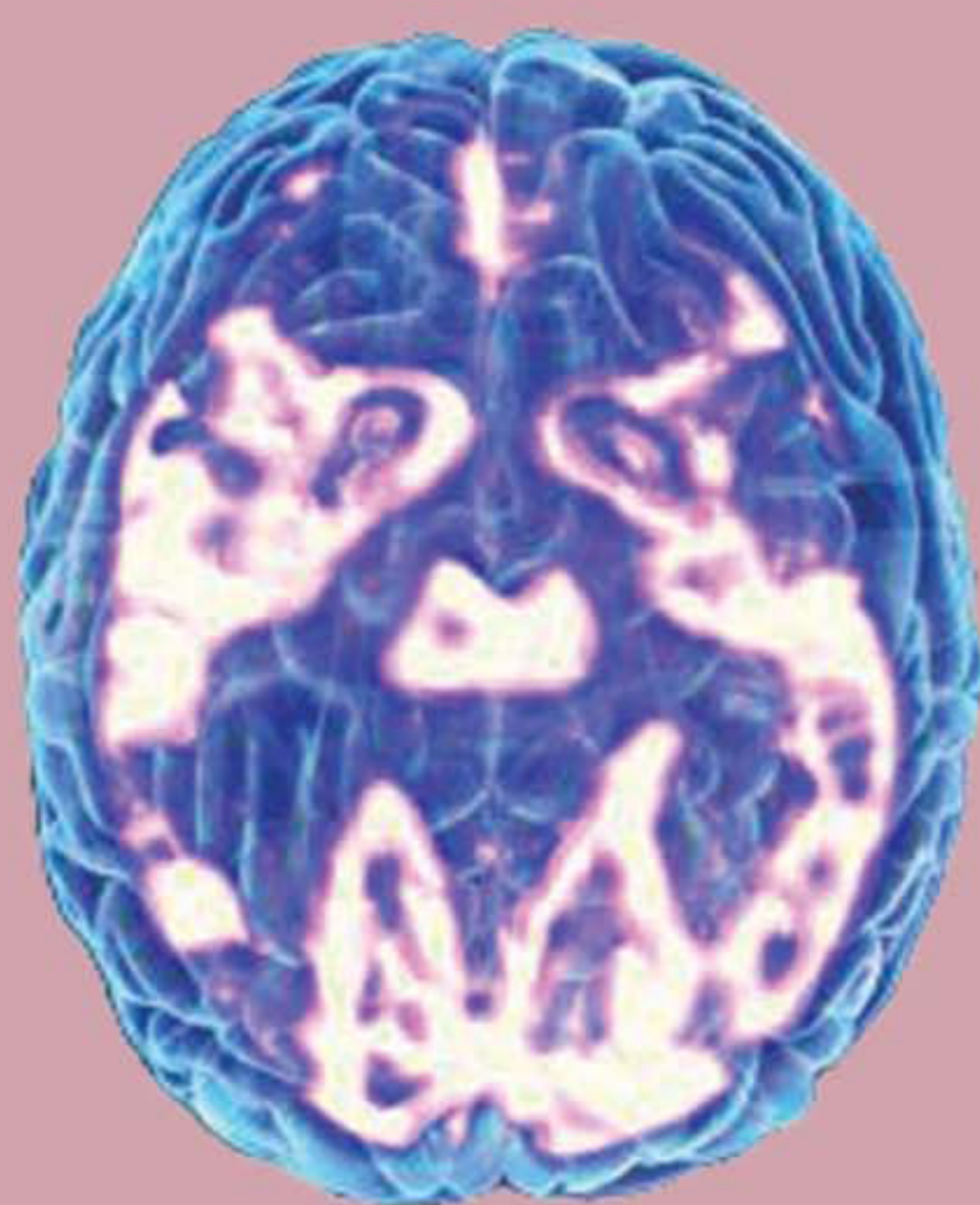
For many people coping with Major Depressive Disorder (MDD) antidepressants have proven to provide adequate symptom relief enabling them to resume the life they once enjoyed. However, some patients experience a form of MDD known as TRD when standard medications provide little to no relief.

Depressed



In depressed patients, the electrical activity in certain areas of the brain is reduced (Illustrative image based on PET scan)

After TMS



As many as two-thirds of depressed patients aren't helped by the first antidepressant they try. Approximately one-third of adults with major depression are considered "treatment resistant", continuing to battle symptoms such as persistent feelings of sadness, sleep disturbances, low energy, and thoughts of death or suicide.

FAQ's

What is TMS (Transcranial Magnetic Stimulation)?

TMS is a non-invasive treatment that uses repetitive magnetic pulses to stimulate brain nerve cells to improve symptoms of depression. During a TMS session, an electromagnetic coil is placed against the scalp. The electromagnetic pulse stimulates nerve cells in the region of your brain involved in mood control and depression. TMS Therapy is typically used when other depression treatments haven't been effective.

Is TMS covered by my insurance?

TMS is covered by most insurance providers including Medicare (and by Medicaid in some states). Prior authorization is typically required for insurance coverage. Your physician will manage this process. Typically, treatment with antidepressant medications and psychotherapy may be needed before insurance will authorize TMS Therapy.

Who can get TMS treatment?

Magstim TMS Therapy Systems are for the treatment of Major Depressive Disorder in adult patients who have failed to achieve improvement from prior antidepressant medication. Your physician may refer you to a TMS-trained physician to determine your candidacy.

What does TMS feel like?

The magnetic coil is positioned on the head. You will hear a clicking sound and feel a tapping sensation on your head when the magnetic pulses are delivered. Many patients watch TV or read during treatment.

Are there any side effects to TMS therapy?

TMS has few known side effects. The most common side effects are mild scalp discomfort or headaches during treatment, but normal activities can typically be resumed immediately after treatment.

What is the typical treatment time?

Most insurances allow for TMS treatment over a 6-week period, 5 times per week. Each treatment is typically between 3 and 37.5 minutes depending on what the physician determines to be best for you. While this varies, it is common for patients to need 30-36 total sessions.

Do I need to get follow-up treatment?

Each patient is different. You can discuss long-term treatment planning with your doctor. Retreatment is often prescribed and reimbursed if you have responded to TMS therapy in the past.

Where can I get treatment?

Tanner Clinic is a TMS treatment site. Contact our psychiatry team to make an appointment or if you have questions.

Is TMS safe?

TMS has over two decades of clinical and scientific research supporting its safe use and application in patients recommended for this therapy.

Who is not a candidate for TMS?

TMS Therapy is well tolerated for most. For those with conditions like frequent seizures, metal implants, or object in or near their head - they may not be appropriate candidates for TMS Therapy.

How does TMS Therapy work?

Transcranial Magnetic Stimulation (TMS) is a form of non-invasive brain stimulation, with over 30 years of application in neuroscientific and clinical research around the world.

- *Magstim TMS Therapy uses short pulses of magnetic energy to stimulate nerve cells in the brain*
- *Magnetic pulses are delivered to the area in the brain that researchers believe is responsible for emotional judgement and mood regulation.*
- *The rapid magnetic pulses created by the TMS system, pass through the skull and generate an electric current in the brain directly under the treatment coil.*
- *These electric currents cause neurons to fire and stimulate surrounding brain cells.*

FDA approved and has been recommended by the American Psychiatric Association since 2010.

 **TANNER CLINIC**

Find more information at www.magstim.com/us-en/treatment-resistant-depression/